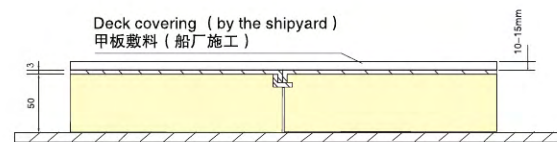
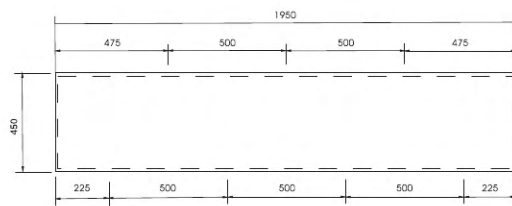
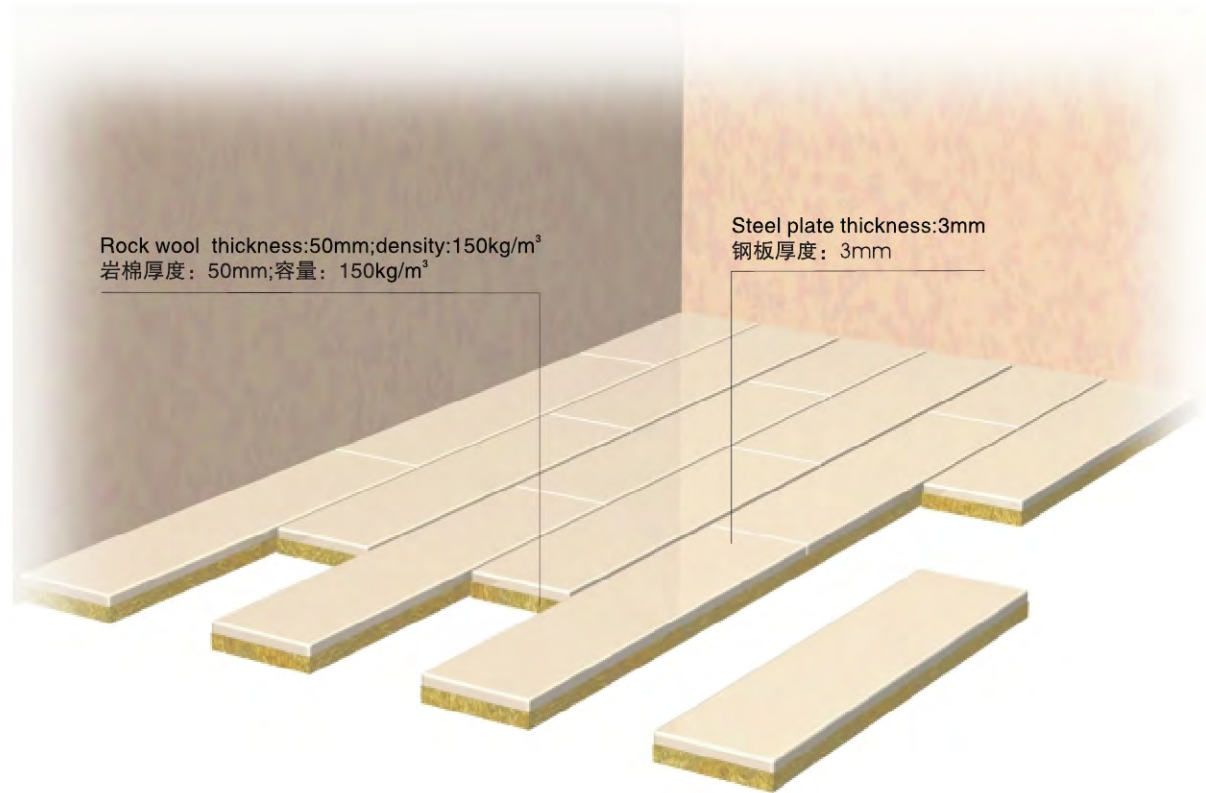


BDA60 (II)



| | |
|-----------------------|--|
| Fire class | A-60 |
| Dimension | 450mm Width (Max) 1950mm Length (Max) |
| Weight | 33.5kg/m ² |
| Thermal transmittance | 0.66Kcal/m ² h°C |
| Tolerances | Width ⁰ ₋₁ × Length ± 1 × Thickness ⁰ ₋₁ |
| Sound reduction | 50dB |

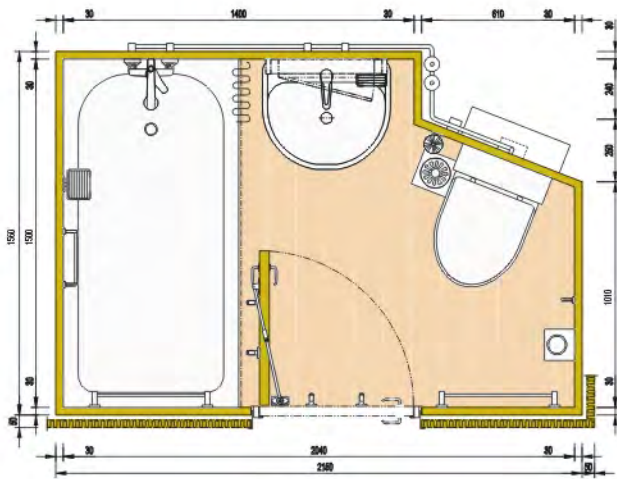
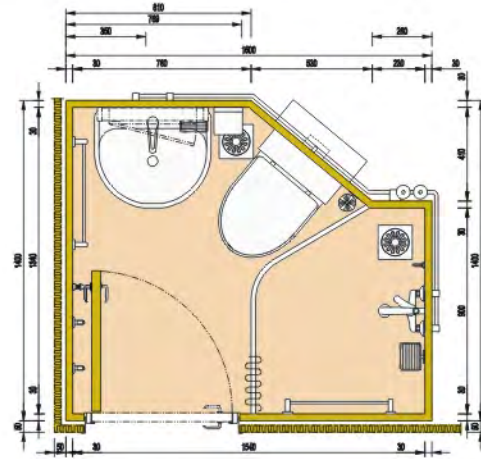


EXAMPLES OF STANDARD MARINE TYPES

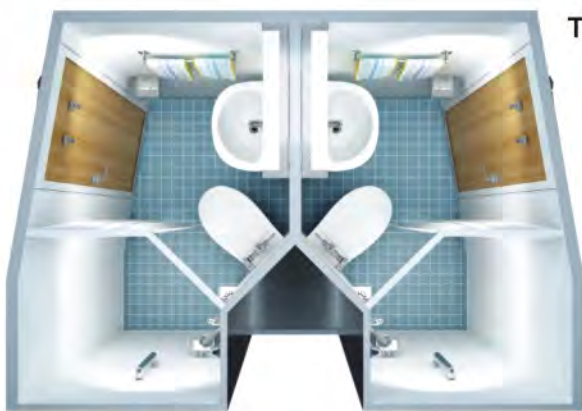
标准图例



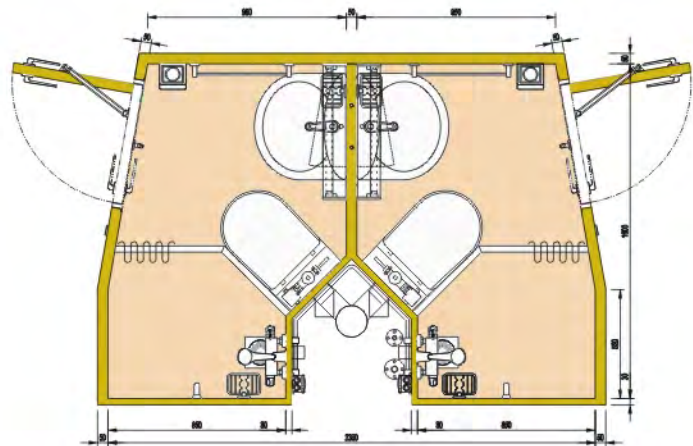
Type A



Type B



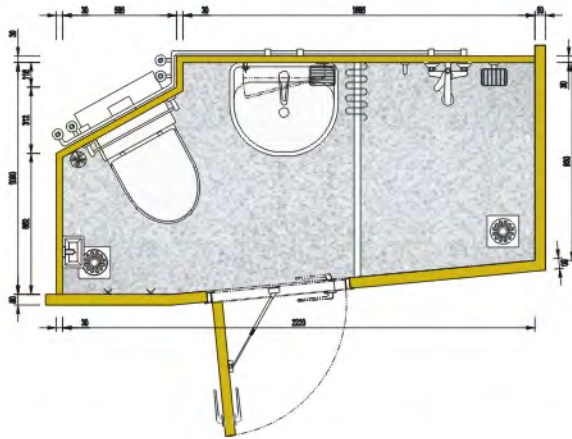
Type C



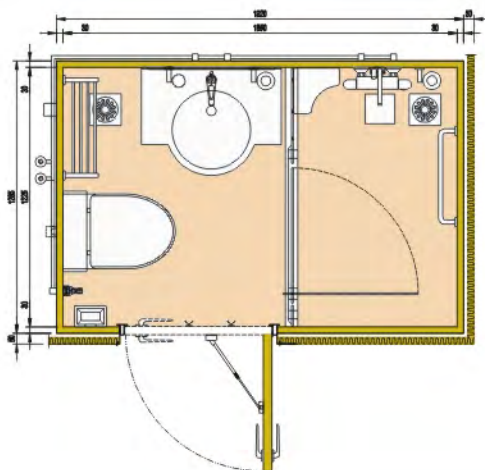
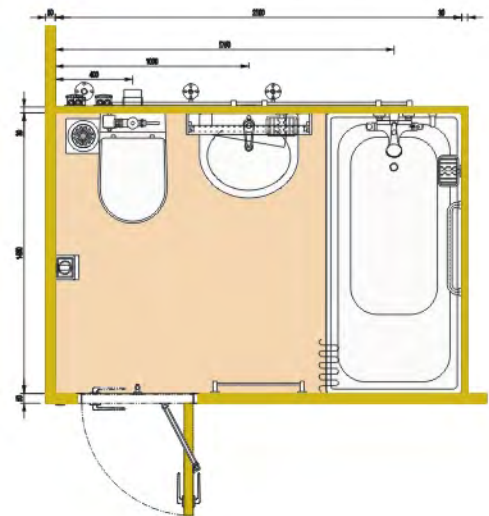


EXAMPLES OF STANDARD MARINE TYPES

标准图例



Type E



Type F

